

Hampshire Water Transfer and Water Recycling Project Environmental Statement – Figure 19.6 Superficial aquifer designations

VOLUME NUMBER: 6

PLANNING INSPECTORATE SCHEME NUMBER: WA010002

APPLICATION DOCUMENT REFERENCE: 6.3

APFP REGULATION: 5(2)(a)

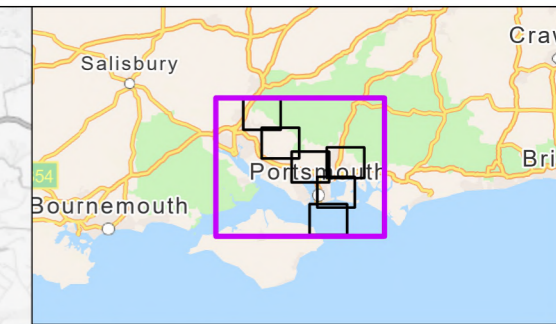
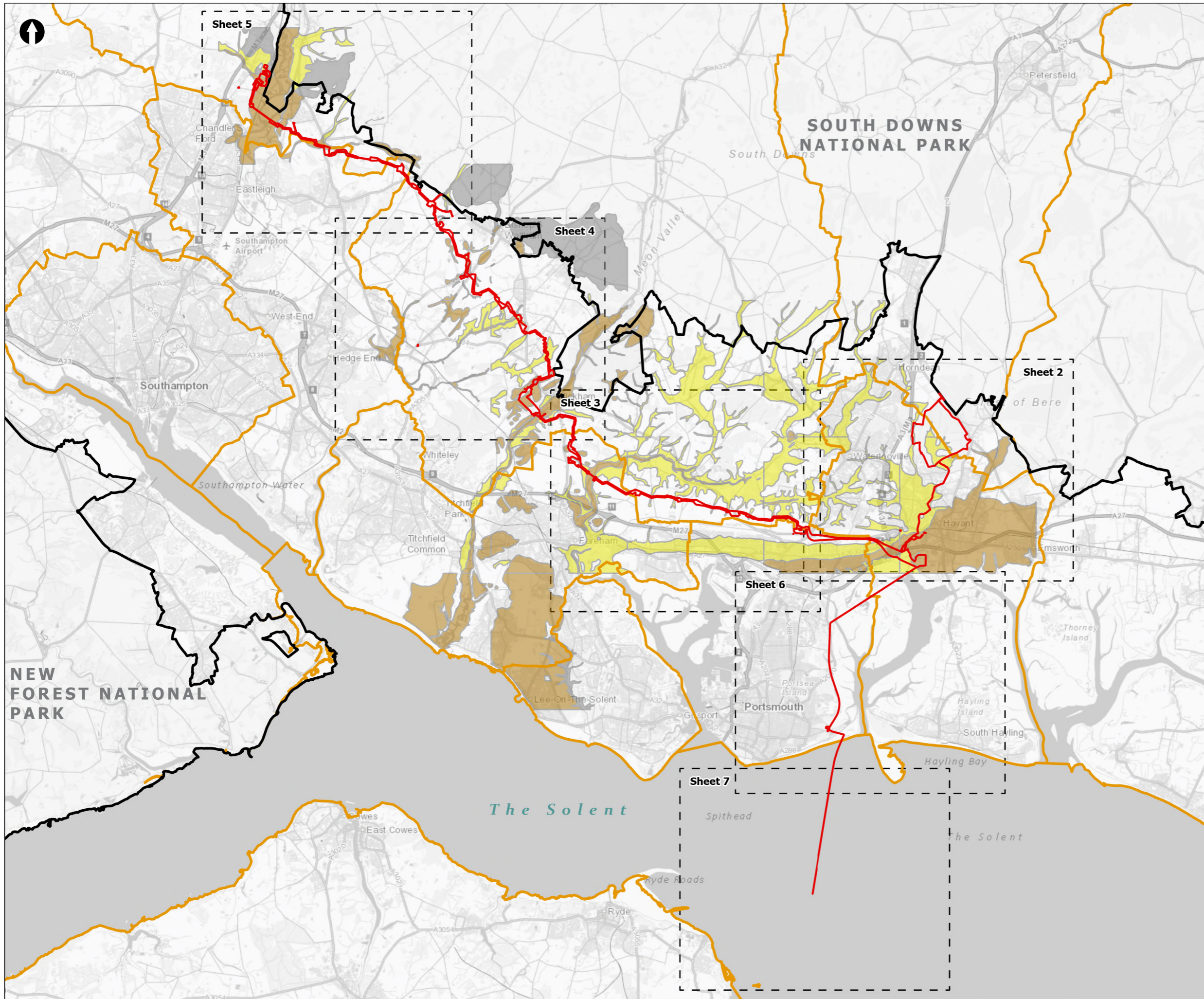
May 2026

Version 0



from
**Southern
Water** 

The Southern Water logo consists of the words 'Southern' and 'Water' stacked vertically in a dark blue, sans-serif font. To the right of the word 'Water' is a graphic element consisting of three stylized, wavy lines in shades of blue, representing water.



- Order Limits
- Sheet Extent Boxes 1:30K
- National Parks
- Local planning authorities
- *Superficial Aquifer Designation**
- Secondary (undifferentiated)
- Secondary A
- Unproductive

*Note that the data displayed in the figure is a subset of the data used to inform the assessment, which cannot be freely reproduced.

Coordinate system: British National Grid; Datum: OSGB 1936
 Data sources: © Crown copyright and database rights 2026 Ordnance Survey 0100031673. Contains OS data © Crown Copyright and database right 2020, Sources: Esri, TomTom, Garmin, FAO, NOAA, USGS, © OpenStreetMap contributors, and the GIS User Community

PROJECT TITLE
 Hampshire Water Transfer and Water Recycling Project

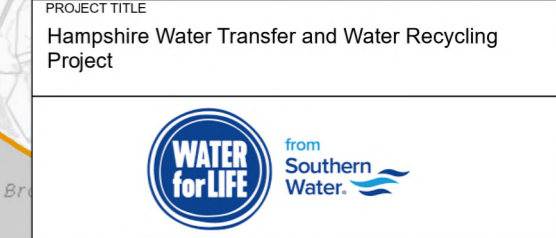
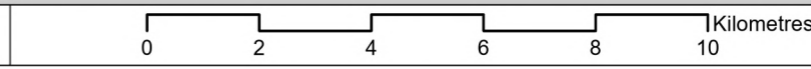


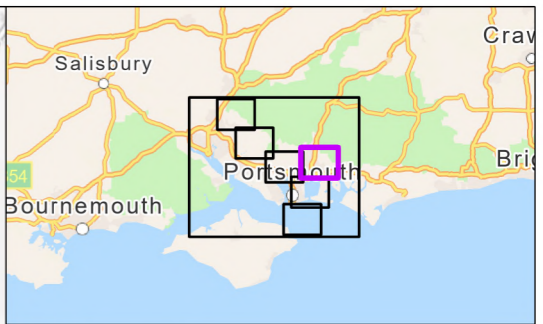
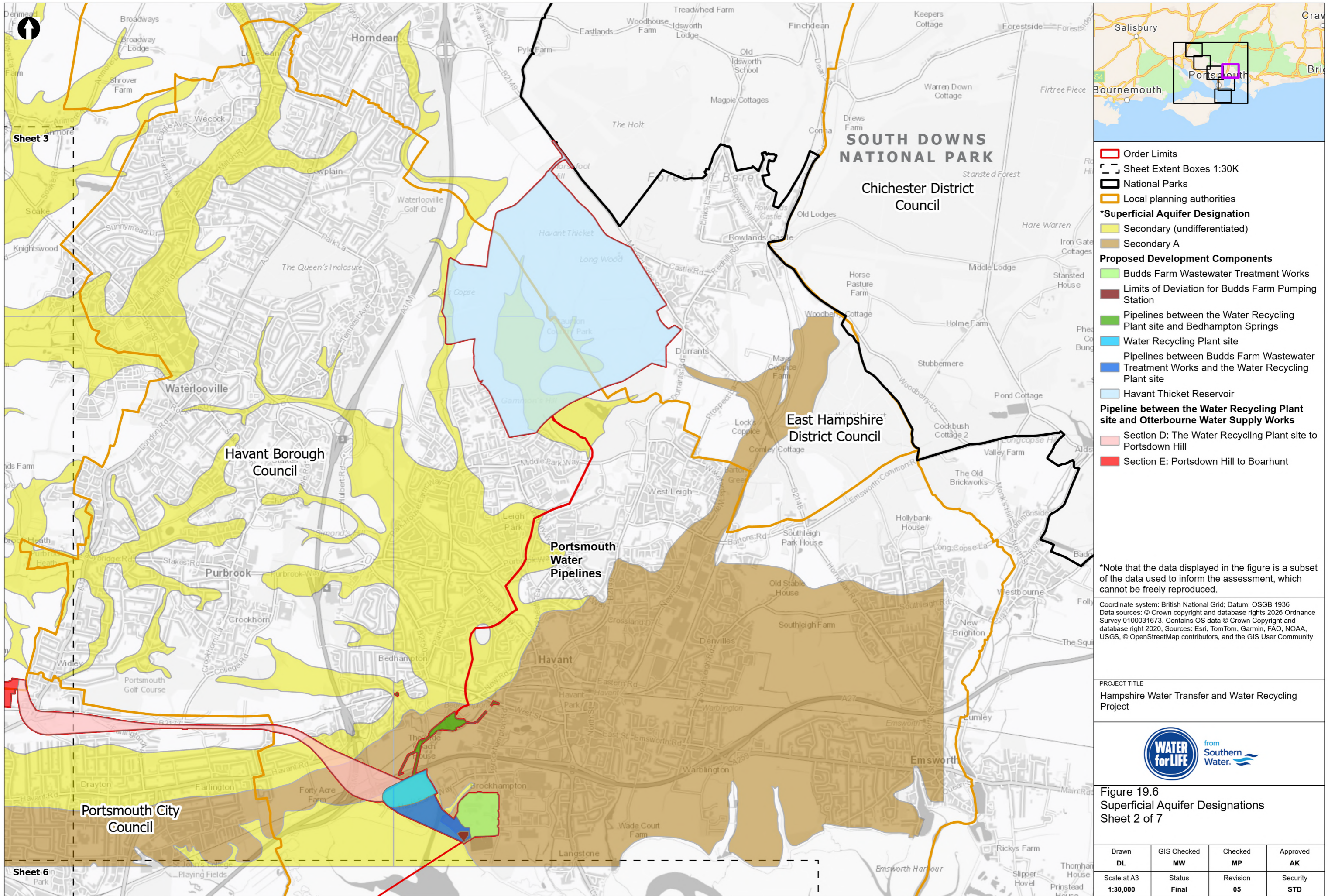
Figure 19.6
 Superficial Aquifer Designations
 Sheet 1 of 7

Drawn DL	GIS Checked MW	Checked MP	Approved AK
Scale at A3 1:135,000	Status Final	Revision 05	Security STD

© Southern Water 2026
 This document is issued for the party which commissioned it and for specific purposes connected with the captioned project only. It should not be relied upon by any other party or used for any other purpose.
 We accept no responsibility for the consequences of this document being relied upon by any other party, or being used for any other purpose, or containing any error or omission which is due to an error or omission in data supplied to us by other parties.



Drawing Number
PC5223-RHD-ES-ZZ-D-Z-0086



- Order Limits
- Sheet Extent Boxes 1:30K
- National Parks
- Local planning authorities
- *Superficial Aquifer Designation**
- Secondary (undifferentiated)
- Secondary A
- Proposed Development Components**
- Budds Farm Wastewater Treatment Works
- Limits of Deviation for Budds Farm Pumping Station
- Pipelines between the Water Recycling Plant site and Bedhampton Springs
- Water Recycling Plant site
- Pipelines between Budds Farm Wastewater Treatment Works and the Water Recycling Plant site
- Havant Thicket Reservoir
- Pipeline between the Water Recycling Plant site and Otterbourne Water Supply Works**
- Section D: The Water Recycling Plant site to Portsdown Hill
- Section E: Portsdown Hill to Boarhunt

*Note that the data displayed in the figure is a subset of the data used to inform the assessment, which cannot be freely reproduced.

Coordinate system: British National Grid; Datum: OSGB 1936
 Data sources: © Crown copyright and database rights 2026 Ordnance Survey 0100031673. Contains OS data © Crown Copyright and database right 2020, Sources: Esri, TomTom, Garmin, FAO, NOAA, USGS, © OpenStreetMap contributors, and the GIS User Community

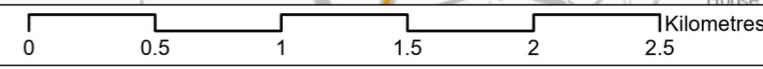
PROJECT TITLE
 Hampshire Water Transfer and Water Recycling Project

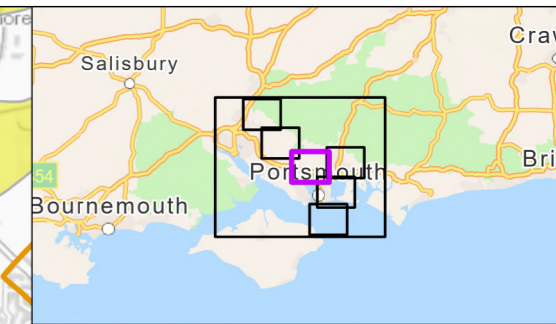
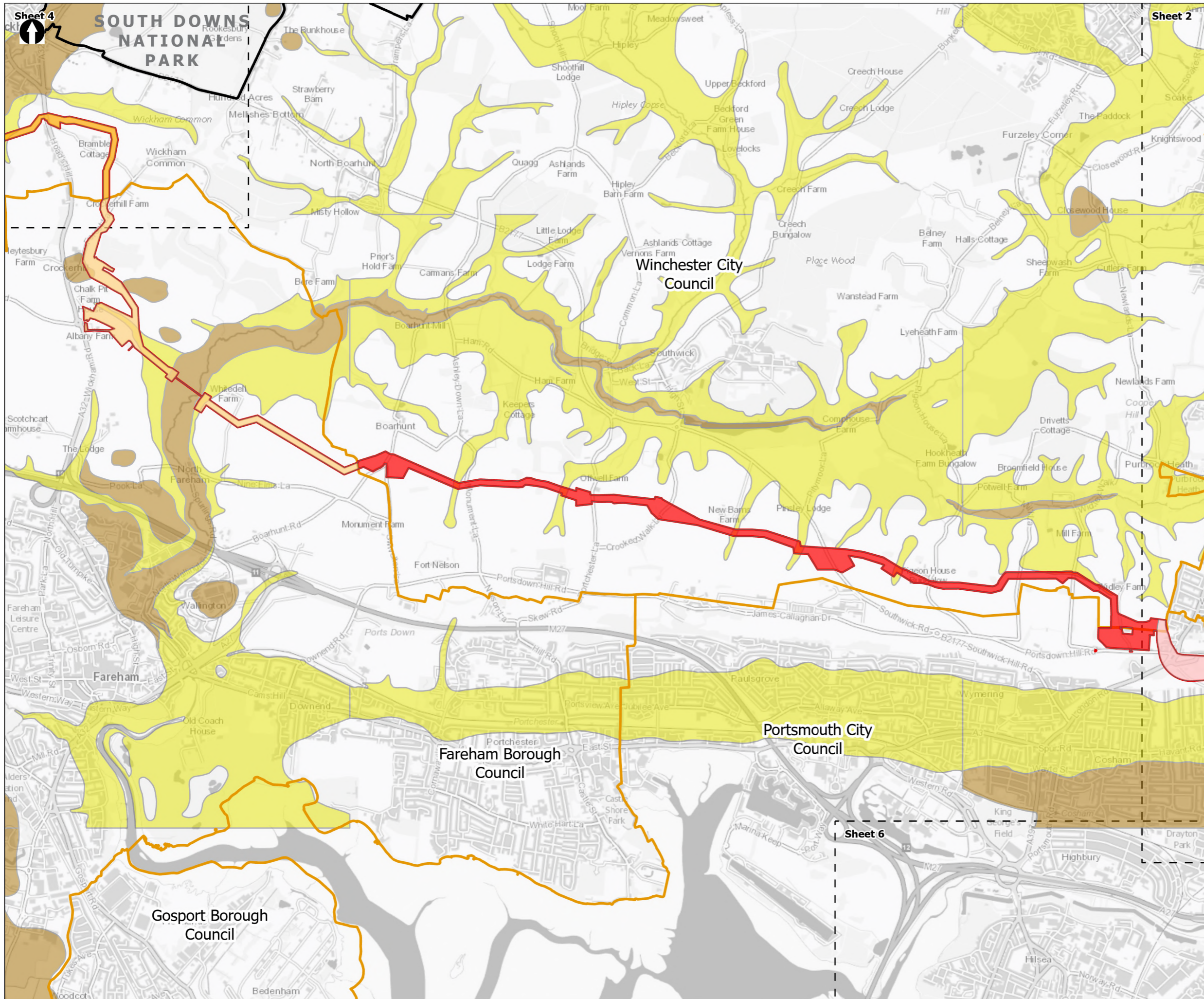


Figure 19.6
 Superficial Aquifer Designations
 Sheet 2 of 7

Drawn DL	GIS Checked MW	Checked MP	Approved AK
Scale at A3 1:30,000	Status Final	Revision 05	Security STD

Drawing Number
 PC5223-RHD-ES-ZZ-D-Z-0086





- Order Limits
 - Sheet Extent Boxes 1:30K
 - National Parks
 - Local planning authorities
 - *Superficial Aquifer Designation**
 - Secondary (undifferentiated)
 - Secondary A
 - Pipeline between the Water Recycling Plant site and Otterbourne Water Supply Works**
 - Section D: The Water Recycling Plant site to Portsdown Hill
 - Section E: Portsdown Hill to Boarhunt
 - Section F: Boarhunt to Crockerhill
 - Section G: Crockerhill to Wickham
- *Note that the data displayed in the figure is a subset of the data used to inform the assessment, which cannot be freely reproduced.

Coordinate system: British National Grid; Datum: OSGB 1936
 Data sources: © Crown copyright and database rights 2026 Ordnance Survey 0100031673. Contains OS data © Crown Copyright and database right 2020. Sources: Esri, TomTom, Garmin, FAO, NOAA, USGS, © OpenStreetMap contributors, and the GIS User Community

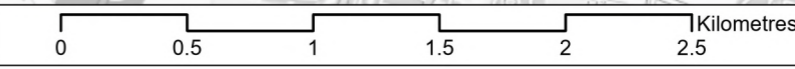
PROJECT TITLE
 Hampshire Water Transfer and Water Recycling Project

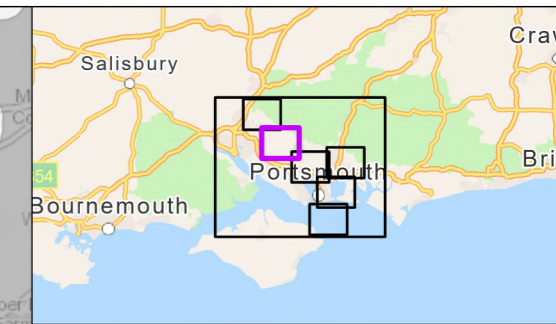
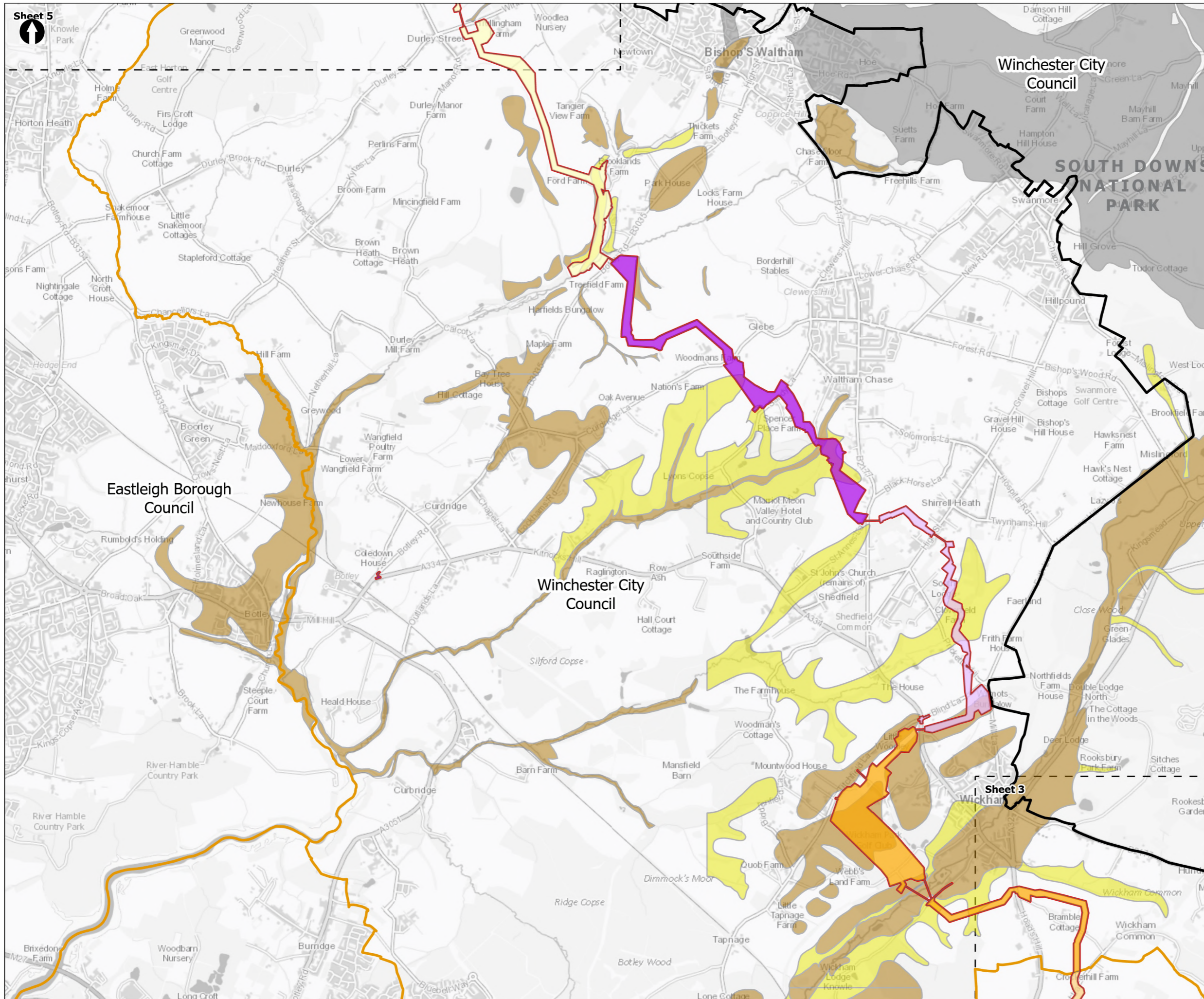


Figure 19.6
 Superficial Aquifer Designations
 Sheet 3 of 7

Drawn DL	GIS Checked MW	Checked MP	Approved AK
Scale at A3 1:30,000	Status Final	Revision 05	Security STD

Drawing Number
PC5223-RHD-ES-ZZ-D-Z-0086





- Order Limits
- Sheet Extent Boxes 1:30K
- National Parks
- Local planning authorities
- *Superficial Aquifer Designation**
- Secondary (undifferentiated)
- Secondary A
- Unproductive
- Pipeline between the Water Recycling Plant site and Otterbourne Water Supply Works**
- Section F: Boarhunt to Crockerhill
- Section G: Crockerhill to Wickham
- Section H: Wickham to Shedfield
- Section J: Shedfield to the River Hamble
- Section K: The River Hamble to Lower Upham

*Note that the data displayed in the figure is a subset of the data used to inform the assessment, which cannot be freely reproduced.

Coordinate system: British National Grid; Datum: OSGB 1936
 Data sources: © Crown copyright and database rights 2026 Ordnance Survey 0100031673. Contains OS data © Crown Copyright and database right 2020. Sources: Esri, TomTom, Garmin, FAO, NOAA, USGS, © OpenStreetMap contributors, and the GIS User Community

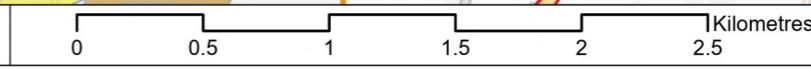
PROJECT TITLE
 Hampshire Water Transfer and Water Recycling Project

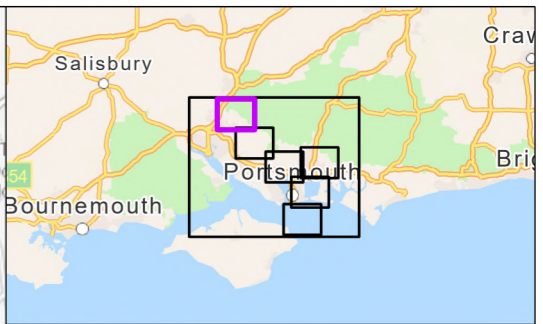
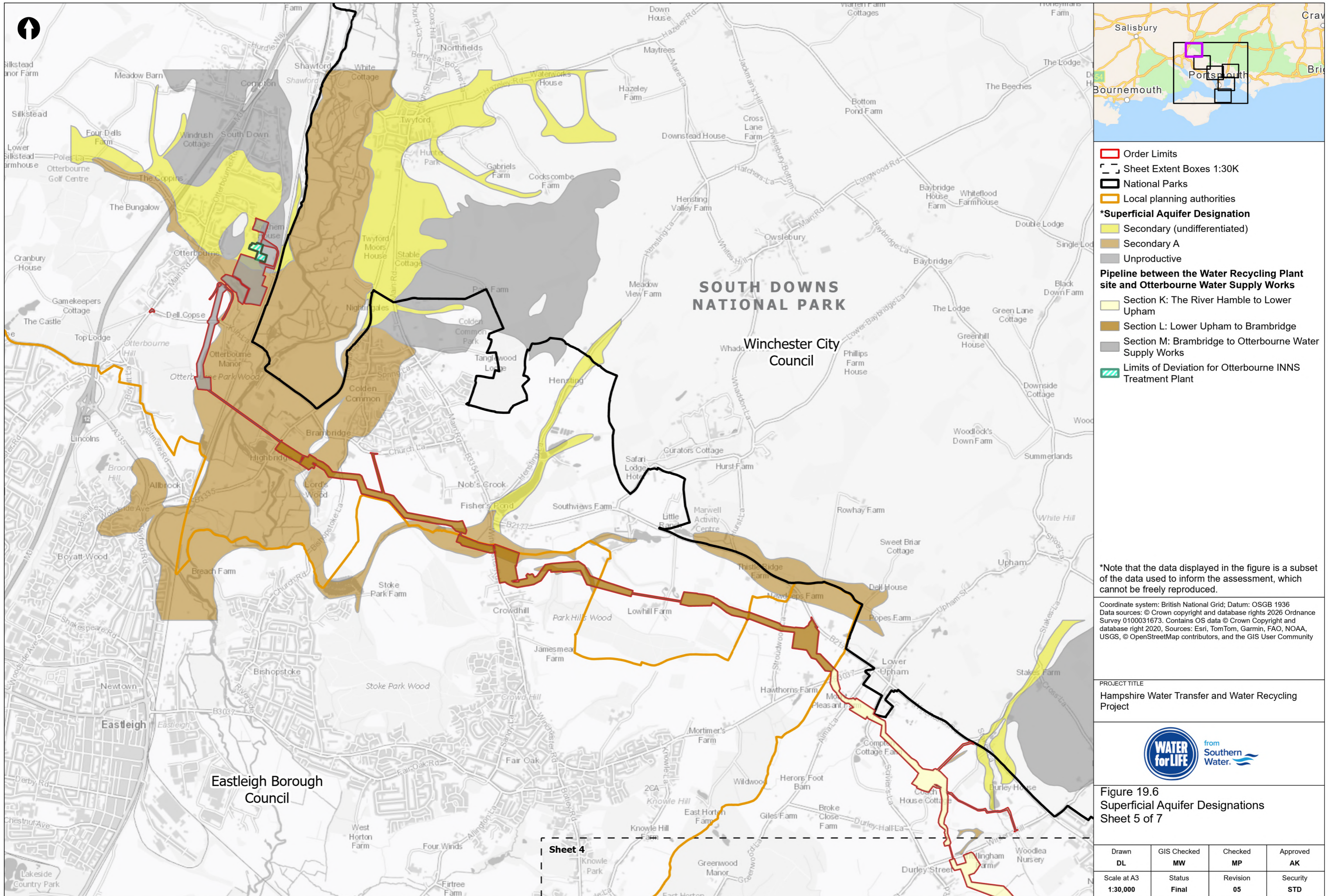


Figure 19.6
 Superficial Aquifer Designations
 Sheet 4 of 7

Drawn DL	GIS Checked MW	Checked MP	Approved AK
Scale at A3 1:30,000	Status Final	Revision 05	Security STD

Drawing Number
 PC5223-RHD-ES-ZZ-D-Z-0086





*Note that the data displayed in the figure is a subset of the data used to inform the assessment, which cannot be freely reproduced.

Coordinate system: British National Grid; Datum: OSGB 1936
 Data sources: © Crown copyright and database rights 2026 Ordnance Survey 0100031673. Contains OS data © Crown Copyright and database right 2020, Sources: Esri, TomTom, Garmin, FAO, NOAA, USGS, © OpenStreetMap contributors, and the GIS User Community

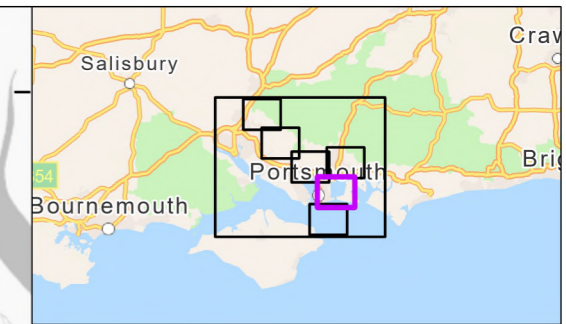
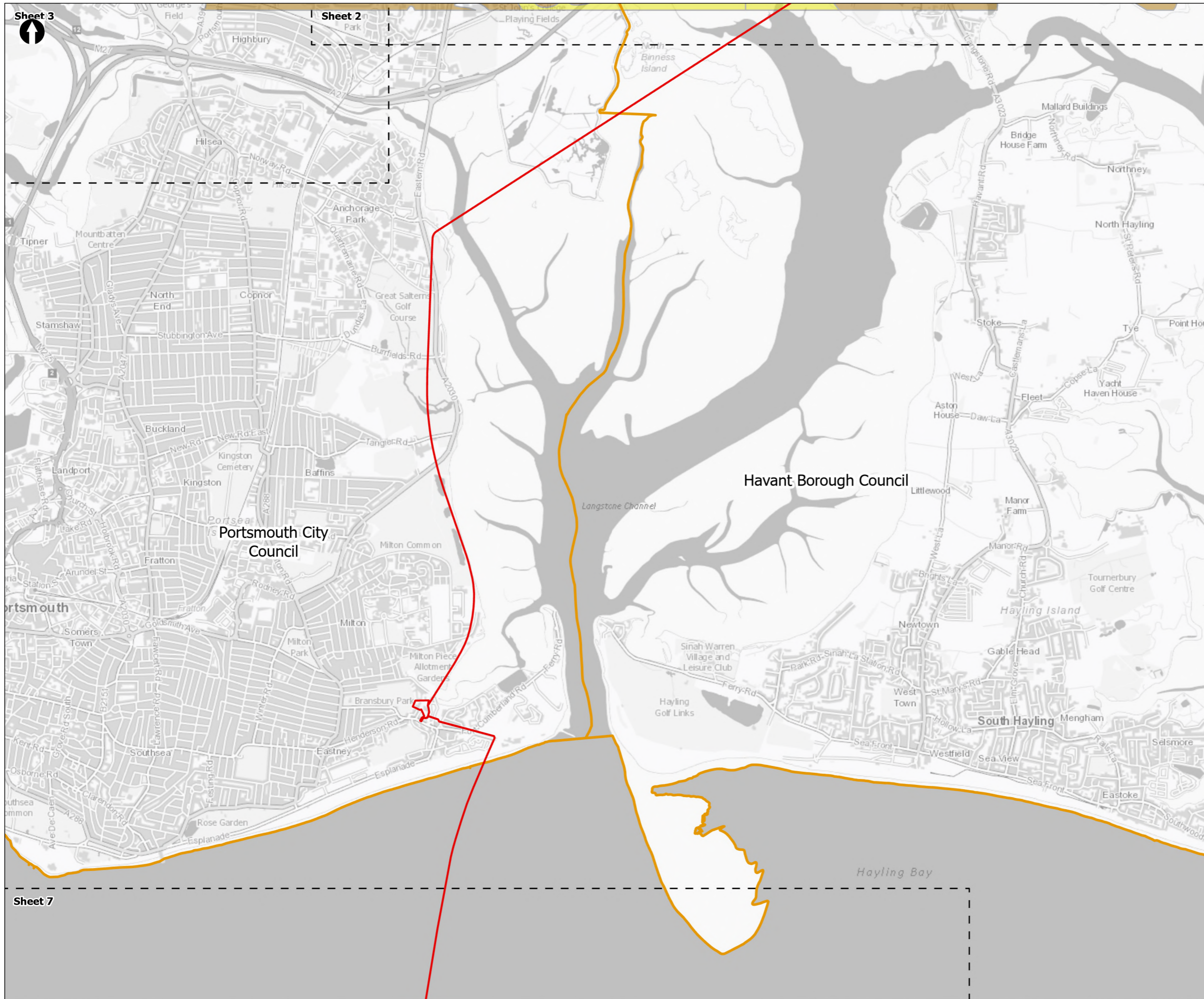
PROJECT TITLE
 Hampshire Water Transfer and Water Recycling Project



Figure 19.6
 Superficial Aquifer Designations
 Sheet 5 of 7

Drawn DL	GIS Checked MW	Checked MP	Approved AK
Scale at A3 1:30,000	Status Final	Revision 05	Security STD

Drawing Number
PC5223-RHD-ES-ZZ-D-Z-0086



Order Limits
 Sheet Extent Boxes 1:30K
 Local planning authorities
***Superficial Aquifer Designation**
 Secondary (undifferentiated)
 Secondary A

*Note that the data displayed in the figure is a subset of the data used to inform the assessment, which cannot be freely reproduced.

Coordinate system: British National Grid; Datum: OSGB 1936
 Data sources: © Crown copyright and database rights 2026 Ordnance Survey 0100031673. Contains OS data © Crown Copyright and database right 2020. Sources: Esri, TomTom, Garmin, FAO, NOAA, USGS, © OpenStreetMap contributors, and the GIS User Community

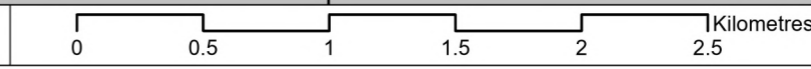
PROJECT TITLE
 Hampshire Water Transfer and Water Recycling Project



Figure 19.6
 Superficial Aquifer Designations
 Sheet 6 of 7

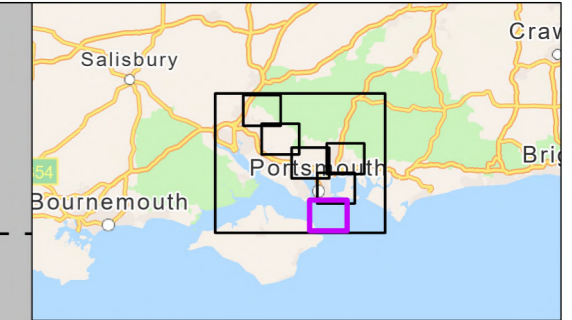
Drawn DL	GIS Checked MW	Checked MP	Approved AK
Scale at A3 1:30,000	Status Final	Revision 05	Security STD

Drawing Number
PC5223-RHD-ES-ZZ-D-Z-0086





Sheet 6



- Order Limits
- Sheet Extent Boxes 1:30K
- Local planning authorities

Spithead



Isle of Wight Council

*Note that the data displayed in the figure is a subset of the data used to inform the assessment, which cannot be freely reproduced.

Coordinate system: British National Grid; Datum: OSGB 1936
Data sources: © Crown copyright and database rights 2026 Ordnance Survey 0100031673. Contains OS data © Crown Copyright and database right 2020. Sources: Esri, TomTom, Garmin, FAO, NOAA, USGS, © OpenStreetMap contributors, and the GIS User Community

PROJECT TITLE
Hampshire Water Transfer and Water Recycling Project



Figure 19.6
Superficial Aquifer Designations
Sheet 7 of 7

Drawn DL	GIS Checked MW	Checked MP	Approved AK
Scale at A3 1:30,000	Status Final	Revision 05	Security STD

